



30M FI-FI TUG BOAT

GENERAL INFO

Basic Functions	Tug Boat - Outfitted for harbour duties, berthing, towing, fire fighting operations and assisting polishing control in the ports.
Design	Macduff Ship Design Ltd. Scotland
Classification Society	Bureau Veritas (BV)
Class Notation	BV † Hull † Mach. Tug Fire Fighting Ship 1 - Water Spaying, Unrestricted Navigation, AUT-UMS
Bollard Pull	40 TBP @AFT and 35 TBP @Forward
Speed	11.5 Knots
Accommodation	9 persons

DIMENSIONS

Length Over All (LOA)	30 m
Breadth	11 m
Depth	5 m
Draught (Max.)	Design: 3,90 m ; Navigation: 5,58 m

TANK CAPACITIES

Fuel	144,33m ³
Fresh Water	30,451m ³
Sewage	11,66m ³
Recovered Oil	11,66m ³
M/E Lube Oil	9,037m ³
Propeller Oil	4,125m ³
Dirty Oil	9,037m ³
Hydraulic Oil	4,125m ³
Detergent	10,467m ³
Foam	10,467m ³

FIRE & SAFETY

External Fi-Fi System & Water Spring	2x Remote operated water, foam monitor
Fixed Fire Fighting Equipment	FM200- Fire Fighting System
Fire & Smoke Detection Systems	For E/R, Accomodation and all compartment monitored from wheelhouse & call (alarm) points at several locations c/w general alarm system from the central alarm panel
Safety Equipment	Inflatable life raft for 12 men RFD

NAVIGATION

Search Light	2x 3000W electric remote
Navigation & Communication Equipment	2x RADAR UNITS - 45NM Range GPS navigator Echo Sounder & Speed Log MAGNETIC COMPASS - CASSENS&PLATH-STT GYRO COMPASS - YOKOGAWA AUTO PILOT - Navigator ANEMOMETER - WALKER Chart Plotter - Lorenz 2x INMARSAT C - JRC NAVTEX - JRC BNWAS - NAVITRON AIS - JRC TELEPHONE AND INTERNAL TALK-BACK SYSTEM, PHONTECH BATTERYLESS TELEP - PHONETECH VHF SETS - JATRON VHF TRANSCEIVER (GMDSS) - JATRON FLEET BROADBAND - JRC ALDIS LAMP

DECK MACHINERY

TOWING WINCH & WINDLASS	Hydraulic operated, min.130 tons break load, nominal pull 20 tons at 20m/min., combined with hydraulic anchor winch, with two vertical warping heads
TOWING HOOK	2 x disk type, 65 tons SWL, quick release, on aft and fore deck.
ANCHORS & CHAIN	2x HHP, Pool type, 375kg each & 2x 165m - 19mm HT
Capstan	On AFT deck,hydraulic
DECK CRANE	Hydraulic operated, 1650kg@7.8m,230bar working pressure,lifting moment 19.36 Tm
WORK BOAT	4,5m length, outfitted for MOB operations, outboard engine.
POLLUTION EQUIPMENT	Removable dispersant/detergent spraying gear on each ship side, mobile dispersant/detergent pump-set c/w gear, oil containment booms, floating oil skimmers, independent power/pump set, high pressure cleaner.
FENDERS	W TYPE, RUBBER, 400x250 & Tire Fenders

MACHINERY

MAIN ENGINE	2 x 1330kW, 900rpm - YANMAR
Shafting & Propeller	2x 1273kW 900rpm, Z drive (SRP 1012 CP) - SCHOTTEL
Generator	2x, C6.6 ACERT, 150 eKW(187kVA), 1800rpm 60Hz, 440V - CATERPILLAR
Air Compressor & Air Bottle	63,6m ³ /h, 40bar, air cooled + 200lt air bottle
SEA WATER PUMP (M/E COOLING)	2 x 100m ³ /h, 18m , centrifugal
STAND-BY SEA WATER PUMP(M/E)	2 x 100m ³ /h, 18m , centrifugal
STAND-BY FRESH WATER PUMP(M/E)	2 x 40m ³ /h, 25m
EMERGENCY BILGE/FIRE PUMP	25 m ³ /h, 6bar,self priming
BILGE PUMP	50 m ³ /h, 4bar,self priming
GENERAL SERVICE -FIRE- DETERGENT PUMP	50 m ³ /h, 6bar
FUEL TRANSFER PUMP	20 m ³ /h, 2,5bar
FUEL OIL SERVICE PUMP	4 m ³ /h, 2bar
DOMESTIC SERVICE PUMP	2x with pressure vessel, 1 xfresh water and 1x sea water ~ 3,2m ³ /h, 4bar/~200ltr, with stand-by pumps
STAND-BY FUEL OIL PUMP(M/E)	2 x 0,8m ³ /h - 0,7MPa
DIRTY OIL PUMP(waste oil discharge pump)	2m ³ /h - 2bar
SUMP OIL SUCTION PUMP	0,5m ³ /h - 1bar
FIRE PUMP	Emergency diesel powered ~25m ³ /h, 8bar,self priming
AIR CONDITIONING COOLING PUMP	25m ³ /h,2bar
SEWAGE DISCHARGE PUMP	3,5m ³ /h,2bar
HPP UNIT COOLING PUMP	4m ³ /h,0,7bar

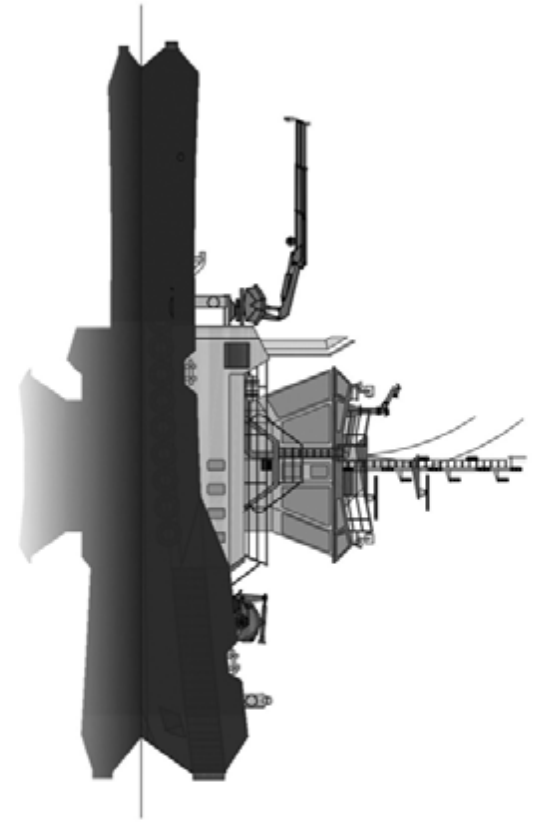
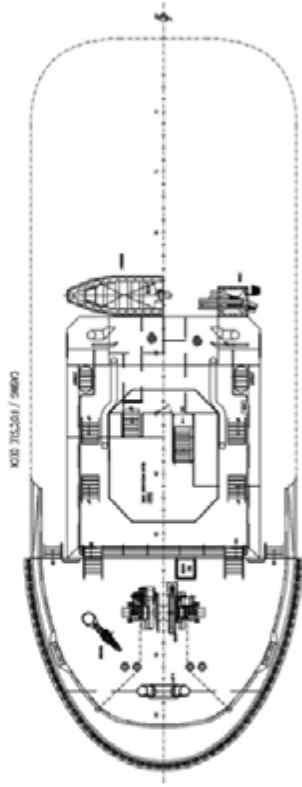
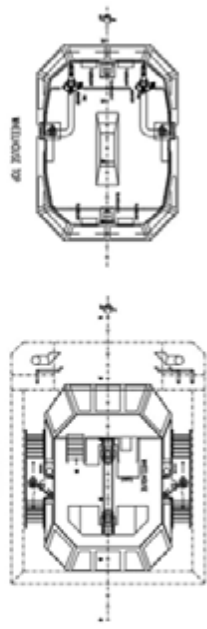
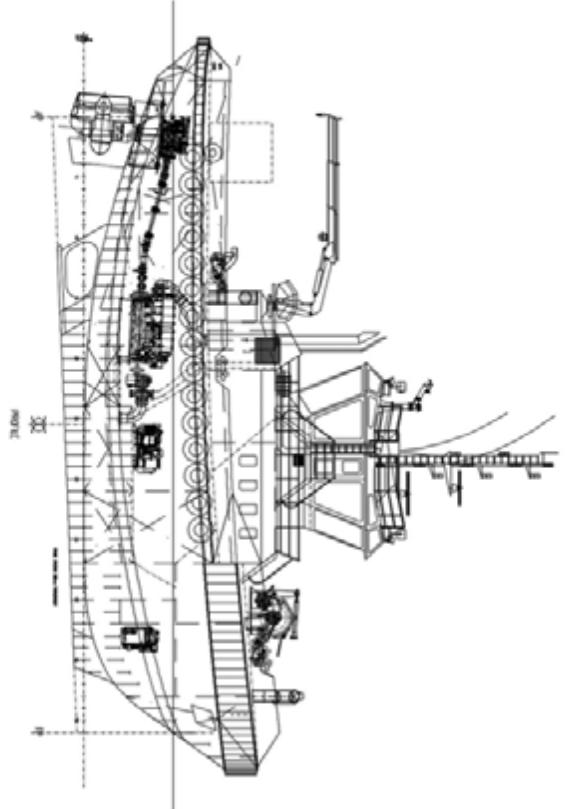
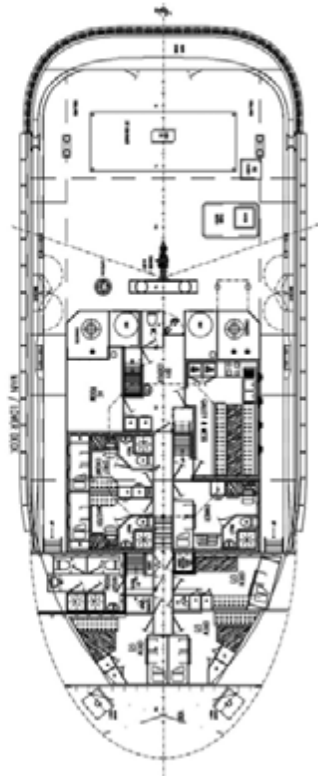
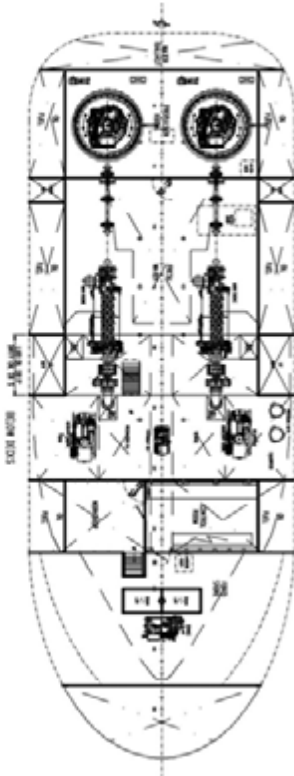
ACCOMMODATION

HVAC Units

25 °C/ %65 rH, with one central A/C for accommodation including cabins, mess room and galley, forced ventilation to comply with the extreme climate conditions. The wheelhouse addition with separate A/C unit.

Accommodation

Total 9 Persons: 3 single cabins for engineer, skipper & owner and 3 double cabins for crew all fitted with WC & Shower unit.



TOR Group of Companies
Aydintepe Mah., Guzin Sok. No:13,
34940, Tuzla, Istanbul, Turkey

P +90 216 494 16 06
F +90 216 494 16 09

tormarine@tor-group.net
www.tor-group.net