



# 27 M. PILOT BOAT

## GENERAL INFO

BASIC FUNCTION	PILOT BOAT, SAFE TRANSFER OF PILOTS & PERSONNELS
DESIGN	MACDUFF SHIP DESIGN LTD. SCOTLAND
CLASSIFICATION SOCIETY	BUREAU VERITAS (BV)
CLASS NOTATION	BV-I + HULL+MACH, SPECIAL SERVICE/PILOT BOAT, UNRESTRICTED NAVIGATION
SPEED	16.9 KNOTS AT 90% MCR, 18 KNOTS MAX.

## DIMENSIONS

LENGTH OVER ALL (LOA)	27 METER
BREADTH	7 M
DEPTH	4.7 M
DRAUGHT(MAX)	2.6 M

## TANK CAPACITIES

---

FUEL	25 038 LITRES
FRESH WATER	11 524 LITRES
GREY WATER	7 546 LITRES
SEWAGE	7 546 LITRES
OILY BILGE	4 068 LITRES

## DECK MACHINERY

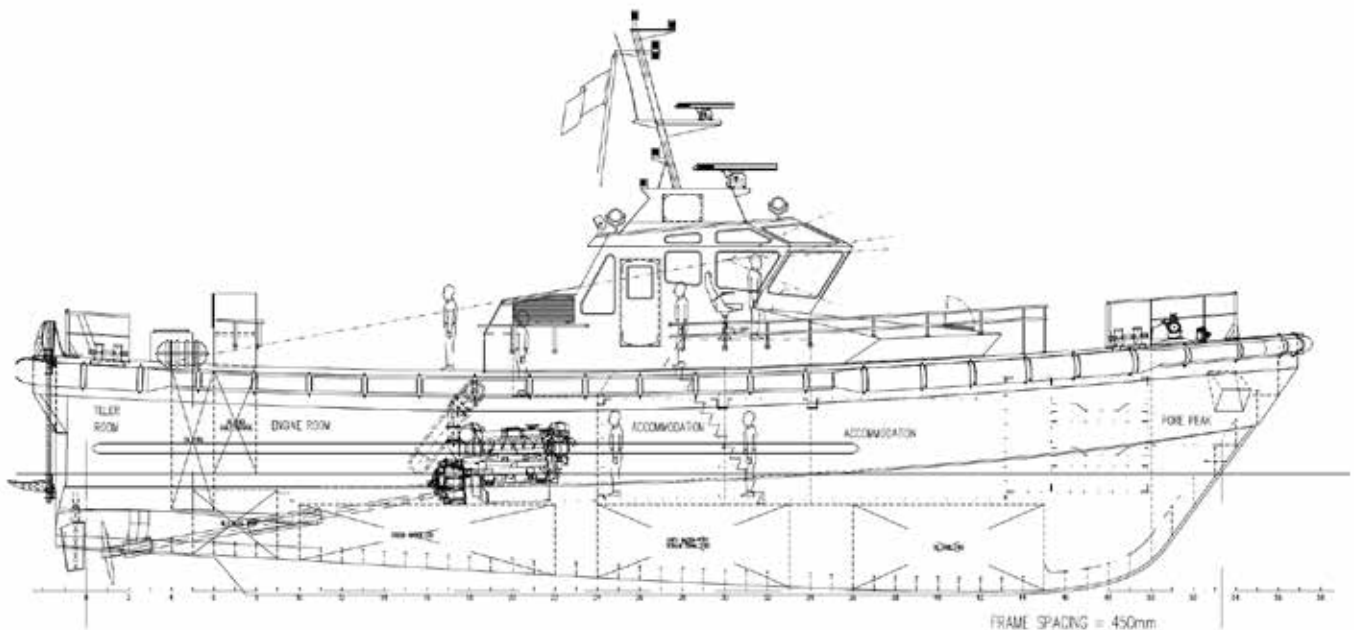
---

WINDLASS	MAX PULL 1250 KG. WARPING DRUM AND MOORING CAPSTAN
ANCHOR	126 KG. VHHP YP POWER TYPE ANCHOR
CHAIN	12,5 mm. GRADE Q2 STUD LINK
MOB RECOVERY SYSTEM	ELECTRIC WINCH OPERATED RECOVERY PLATFORM AT TRANSOM
HADRIAN SAFETY RAIL SYSTEM	FALL PROTECTION SYSTEM FOR PILOT TRANSFER

## FIRE & SAFETY

---

SAFETY EQUIPMENT	2X INFLATABLE LIFE RAFT, FOR 12 PERSONS
FIXED FIRE EXTINGUISHER SYSTEM	FM200 CLEAN AGENT SUPPRESSION SYSTEM
EMG FIRE PUMP	ENGINE DRIVEN MANUAL START FIRE PUMP, 25.2m <sup>3</sup> /h @ 2bar - 7.2 m <sup>3</sup> /h@4.5bar
FIRE EXTINGUISHERS	ADEQUATE FOAM AND DRY POWDER EXT.
FIXED FIRE DETECTION AND MONITORING	FOR ALL COMPATMENTS



DEEP "U" HULL FORM FOR INCREASED DRAUGHT IN ORDER TO MINIMIZE  
 GOING WITHIN AND IMPROVE SEA KEEPING OF THE VESSEL  
 SUBSTANTIAL RUBBER FENDER FITTED AROUND VESSEL AT WARP BECK AND AFT AT  
 WATERLINE TO PROTECT WHEN LOADING ALONGSIDE OTHER VESSELS AND JETTIES

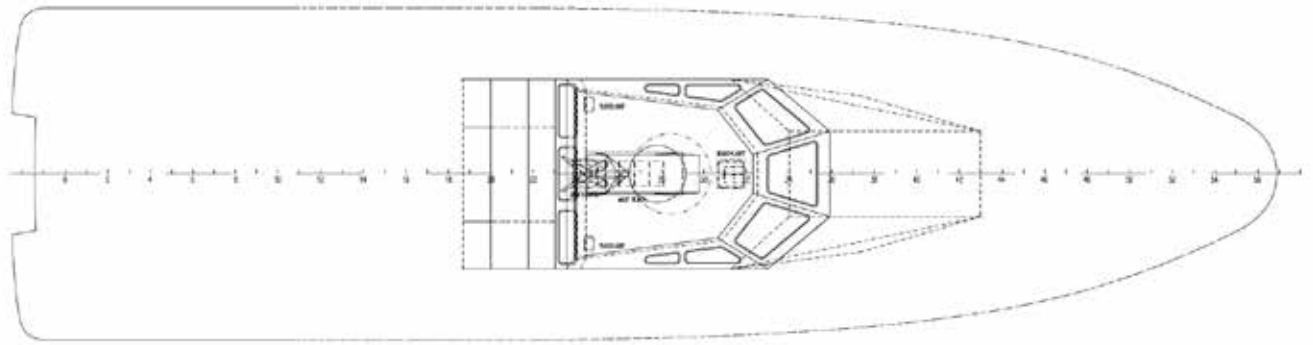
PROFILE

## MACHINERY

MAIN ENGINE	2XYANMAR 12AYM-WGT 1340 KW, 1940 RPM, 4-CYCLE DIESEL ENGINE
REDUCTION GEAR	2X ZF 5050A , RATIO 3.222:1
GEN SETs	2X CAT C4.4 58eKW @ 1800 RPM,
PROPELLER	2X FPP, 5 BLADES NiBrAl
STEERING SYSTEM	ELECTRO-HYDRAULIC
AIR CONDITION	2 X DOMETIC MCGX72-4663
FIRE&BILGE PUMP&GS PUMP	2X, 24m3/h
FUEL TRANSFER PUMP	
TAIL SHAFT COOLING PUMP	
FW PRESSURE SET	
BOILER	
SEWAGE DISCHARGE PUMP	
OILY BILGE DISCHARGE PUMP	

## ACCOMMODATION & NAVIGATION

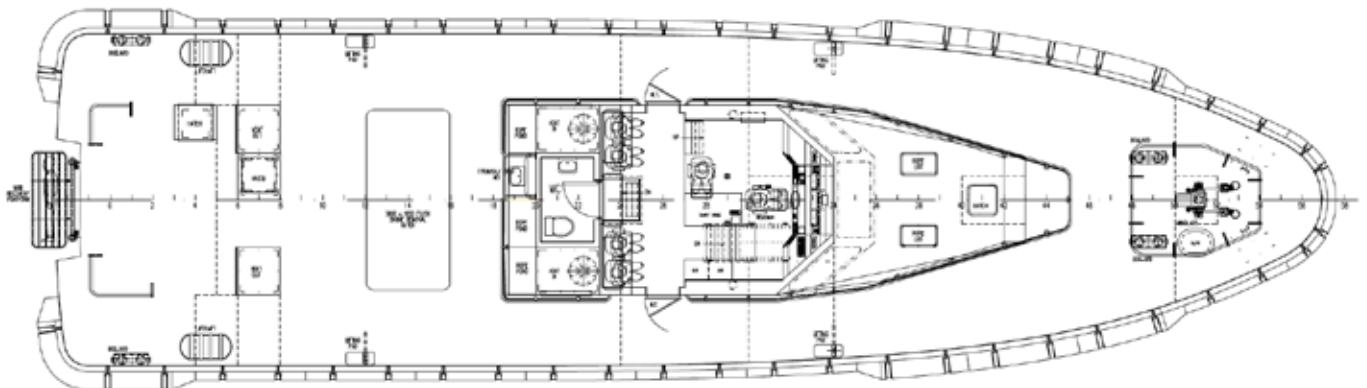
ACCOMMODATION	2XWC & SHOWER, GALLEY & MESS-ROOM, 3XCABIN FOR 2 PERSONS, 1X CABIN FOR 4 PERSON IN BELOW DECK
CHAIRS	1XHELMSMAN & 4X PASSENGER SEATS IN WHEELHOUSE
SEARCH LIGHT	2X1000 W, REMOTE CONTROL
NAVIGATION&COMMUNICATION EQUIPMENTS	2X RADAR UNIT SIMRAD NSS12 EVO2 & HALO 3 PULSE
	GPS NAVIGATOR, SIMRAD GS25 GPS
	AUTO PILOT, SIMRAD AP60
	WIND INDICATOR
	ECHO SOUNDER, NAVICO B744V
	GPS COMPASS, SIMRAD HS80A
	MAGNETIC COMPASS, CASSENS&PLATH TYPE 21
	AIS, SIMRAD V5035
	3X VHF, SIMRAD
	MF/HF, SAILOR 6310
	NAVTEX, SAILOR 6391



WHEELHOUSE TOP WITH FORWARD WINDOWS FOR HIGH LEVEL VISIBILITY  
SEARCHLIGHT AND DECK FLOODLIGHTS AND MAST WITH NAVIGATION LIGHTS AND AERIALS

### WHEELHOUSE TOP

BUREAU VERITAS Section ...2472K...  
VU  
Issued: 10 Dec 2018  
*(Please see drawing  
for plan approval office)*

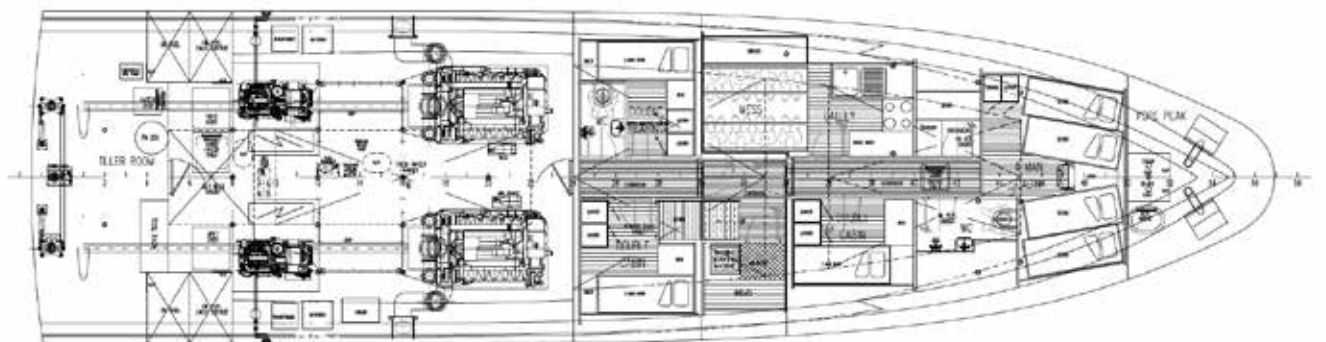


AFT DECK WITH MAIN QUARBOARD RECOVERY, ENGINE ROOM  
VENTILATION AND ACCESS

WHEELHOUSE WITH ACCOMMODATION FOR 8 SPLIT INTO  
WELDEMAN SEAT, NAVIGATORS SEAT  
AND 4 PILOT SEATS, WC AFT, HADRMAN BAY AROUND  
WHEELHOUSE FOR SAFE ACCESS AND WALKWAY WITH  
GREATER THAN 1M CLEAR WIDTH FOR ACCESS DOWN  
WHEELHOUSE DECK

CLEAR WORKING DECK FOR PILOT EMBARKATION

### MAIN DECK



STEERING GEAR COMPARTMENT  
WITH RESTRICHION

ENGINE ROOM WITH 2 x 12ATW TANWAR WARP ENGINES  
2x GENERATOR SITS WITH EXHAUST SYSTEMS  
PUMPING AND SWITCHBOARD

CREW ACCOMMODATION FOR 10  
2 SINGLE CABINS  
1 FOUR PERSON CABIN  
GALLEY AND MESS AREA  
2 WC SPACES  
LAUNDRY AND PROVISIONS LOCKERS

FORE PEAK AND CHAIN LOCKER

### BELOW DECK



TOR Group of Companies  
Aydintepe Mah., Guzin Sok. No:13,  
34940, Tuzla, Istanbul, Turkey

P +90 216 494 16 06  
F +90 216 494 16 09

tormarine@tor-group.net  
www.tor-group.net



